

Publication: Freedom - VV - Daily Press;Date: Apr 28, 2010;Section: High Desert;Page: B1



## COUNTY MOVES ON SPECIFIC PLAN FOR HELENDALE

### Plan to cover water, sewer, traffic and more

BY NATASHA LINDSTROM STAFF WRITER

#### HELENDALE

• With developers increasingly eyeing Helendale land, San Bernardino County has commissioned a plan that will guide long-term development within the sprawling unincorporated community.

On Tuesday the county Board of Supervisors awarded The Arroyo Group a roughly \$400,000 contract to design a specific plan for Helendale, which now houses an estimated 7,000 people in the planned residential community of Silver Lakes.

"I think it's a tremendous step forward for this community out here, in that county Land Use Services has seen the significant potential for growth in this area," Helendale Community Service District General Manager Kimberly Cox said.

In addition to outlining land uses, the plan will cover water, sewer, traffic circulation, landscaping, infrastructure financing, and design guidelines for architecture, signage and lighting.

Cox said she's hopeful the new plan will lay the foundation for transportation corridors, commercial and industrial zoning and improved infrastructure, "in order to provide a template whereby growth can occur in a reasonable manner, rather than a patch-work manner."

"It will remain primarily a bedroom-type community, much like Apple Valley as it has developed over the years," Cox said. "We're hoping that we will be able to provide nice, high-end housing for companies that locate, be it the Southern California Logistics Airport or the federal prison."

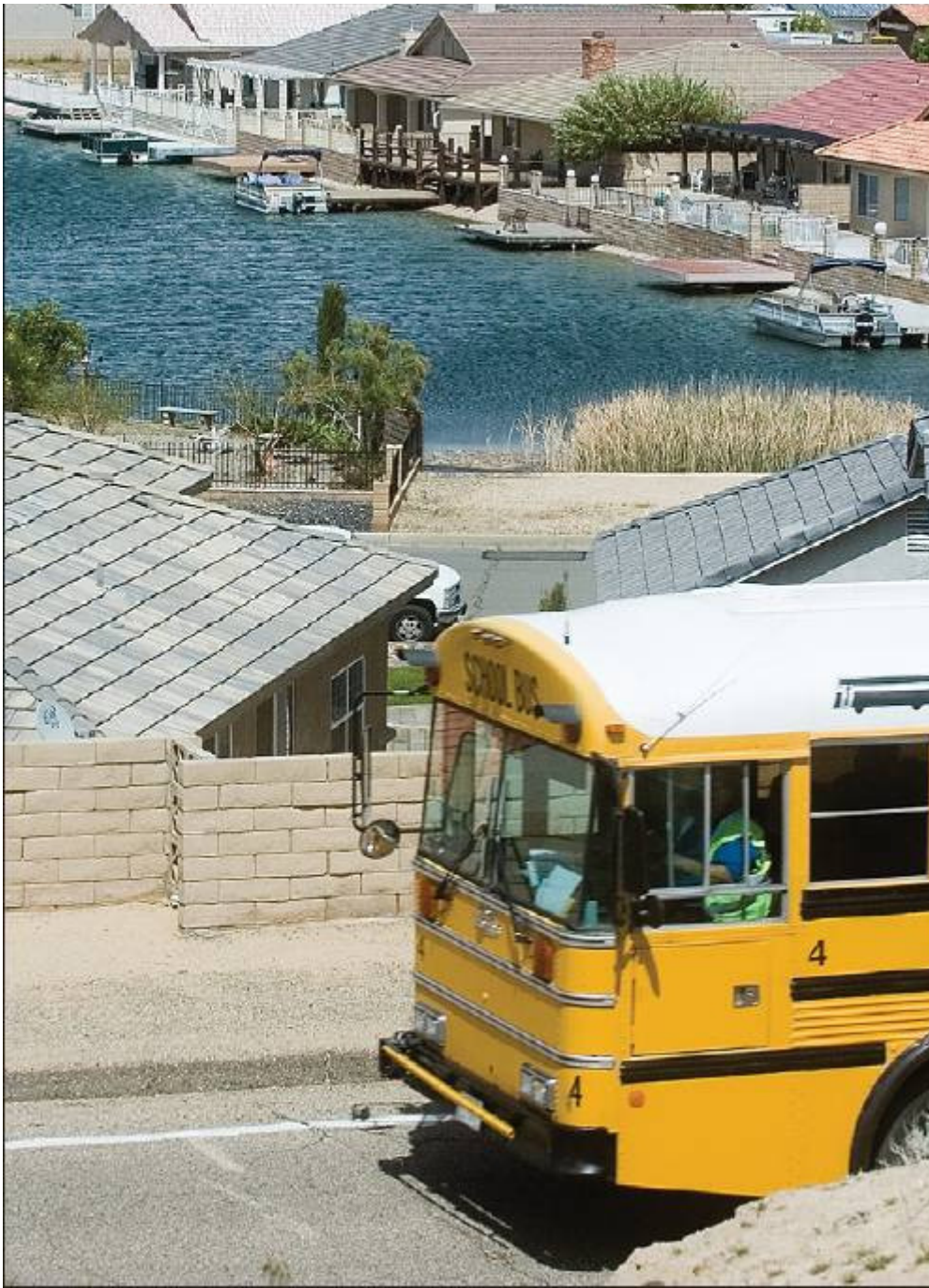
Sandy Wojecki, general manager of the Silver Lakes Homeowners Association, said the community needs more commercial zones for office space, ball fields, a community center and outlets for teens, such as a BMX/skate park.

Both Cox and Wojecki said they'd like to see a crossing built over the railroad and other avenues that would reduce the commercial traffic now directed through the heart of the community.

The 18-month process for the specific plan is not set for completion until October 2011.

"As the county became aware of several large development projects proposed for Helendale, I requested that we do a comprehensive plan for the entire area to ensure there is adequate infrastructure and amenities to support a growing community," District Supervisor Brad Mitzelfelt said in a statement. "This will enable us to plan for growth in a responsible way so we can build a community with a high quality of life that new residents and future generations will be proud of."





JAMES QUIGG, DAILY PRESS NEW PLAN: A school bus passes the community of Silver Lakes in Helendale on Shadow Mountain Road. The San Bernardino County Board of Supervisors hired a firm to create a Helendale Specific Plan — a detailed development plan for the area.